



# Maloti-Drakensberg

*Itinerary ideas*

## The best walks

### Angel's Cove & Waterfall Walk



This valley is one of the areas where people tend to avoid, due to its apparent inaccessibility, which of course is not the case. This walk can be done by anyone; it is one that has a magnificent solitude to it, in addition to wonderful scenery. One can turn back at any point, so it is ideal for anyone.

- » Cell, WhatApp: +2782 609 8988
- » Tel: +2758 713 6361/2
- » Email: info@witsieshoek.co.za
- » Web: www.witsieshoek.co.za

### Easy Strolls at the Cavern



The Northern Drakensberg has a great variety of hiking trails ranging from easy to strenuous. The nature lover will enjoy the Cavern's easy strolls. A highlight of a South African visit is to spend a day walking along the Tugela River to the Tugela Gorge. For families there are easy and informative nature walks through dense fern forests, including one to a cave which echoes and another to a cave where cannibals once lived.

- » Cell: +2783 701 5724
- » Landline: +2736 438 6270
- » Email: info@cavern.co.za
- » Web: cavern.co.za

### Cathedral Peak Walks



Cathedral Peak Hotel is located in one of the most beautiful parts of the Drakensberg, surrounded by mountains on all sides. There are 19 walks/hikes that leave and return to the Hotel, for all levels of fitness, skill and ability. There is a guided walk/hike that leaves the hotel every morning (see reception for details of which hike on which day). There are also maps that can be purchased at reception for those walkers who would like to venture out on their own. All guests must sign out in the Hiking Book at reception before they leave, and then sign back in again when they return.

- » Landline: +2736 488 1888
- » Email: info@cathedralpeak.co.za
- » Web: cathedralpeak.co.za

## Fauna and Flora experiences

### Enjoy the birdlife at Maliba Lodge



From the Mountain Pippit to the majestic Bearded Vulture, there is plenty for the avid birdwatcher to see during their stay at Maliba. Ts'ehlanyane National Park, as well as Lesotho as a whole has a huge cross section of beautiful flying fauna to admire and photograph.

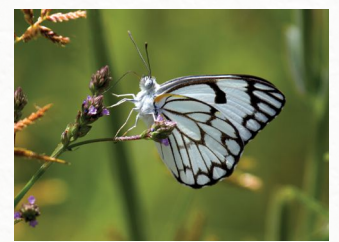
- » Web: maliba-lodge.com
- » Email: reservations@maliba-lodge.com
- » WhatsApp Bookings: +27 31 702 8791

### Cherry Picking at Fouriesburg Country Inn



Take a tour of the Ionia Cherry Farm and experience the beauty and magnificence of the Eastern Free State, where you will have the opportunity to take photos, pick cherries and take a walk through the orchard.

- » Web: fouriesburgcountryinn.co.za
- » Email: stay@fouriesburgcountryinn.co.za
- » Call: +2758 223 0207





## Maloti-Drakensberg

*Itinerary ideas*

### Exciting Nature Experiences

#### Star Gazing at Giant Castle Hammock Camp



Mlendeni Sitole will tell you his stories of the night skies. He has built a star gazing hammock camp for you to relax and observe the heavens and listen to the night sounds. He makes you feel like you have never seen the night sky before when you go stargazing at Antbear Lodge.

- » Cell: +2773 612 6964
- » Email: [andrew@antbear.co.za](mailto:andrew@antbear.co.za)

#### Horse Whispering



Antbear offers horse trails on the farm that are particularly suited to beginners. They practice the gentler horse whispering methods to train our horses and go for slow outrides on the farm.

- » Cell: +2773 612 6964
- » Email: [andrew@antbear.co.za](mailto:andrew@antbear.co.za)



#### Fly Fishing – Semonkong Lodge



Semonkong Lodge is proud to offer fly fisherman a pristine piece of river with amazing fishing opportunities.

The Maletsunyane River on whose banks Semonkong lodge nestles, presents unique fishing opportunities. The fishing is divided by the mighty Maletsunyane falls which forms a formidable natural barrier to fish movement and creates two distinctly different fishing zones in the river.

- » Landline: +266 2700 6037
- » Cell: +266 6202 1021, +266 5888 1021
- » Web: [www.semonkonglodge.com](http://www.semonkonglodge.com)

#### Glamping at Mountain Splendour Eco Resort



This is camping made oh so easy, arrive to a fully equipped, pre-erected tent. Sleep in a real bed while enjoying an authentic camping experience.

- » Landline: +2736 468 1172
- » Web: [mountainsplendour.co.za](http://mountainsplendour.co.za)
- » Email: [info@mountainsplendour.co.za](mailto:info@mountainsplendour.co.za)

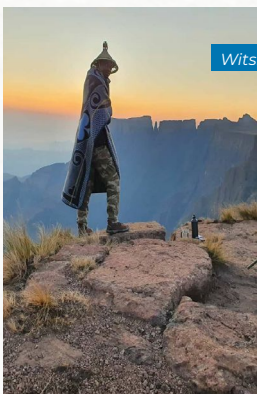
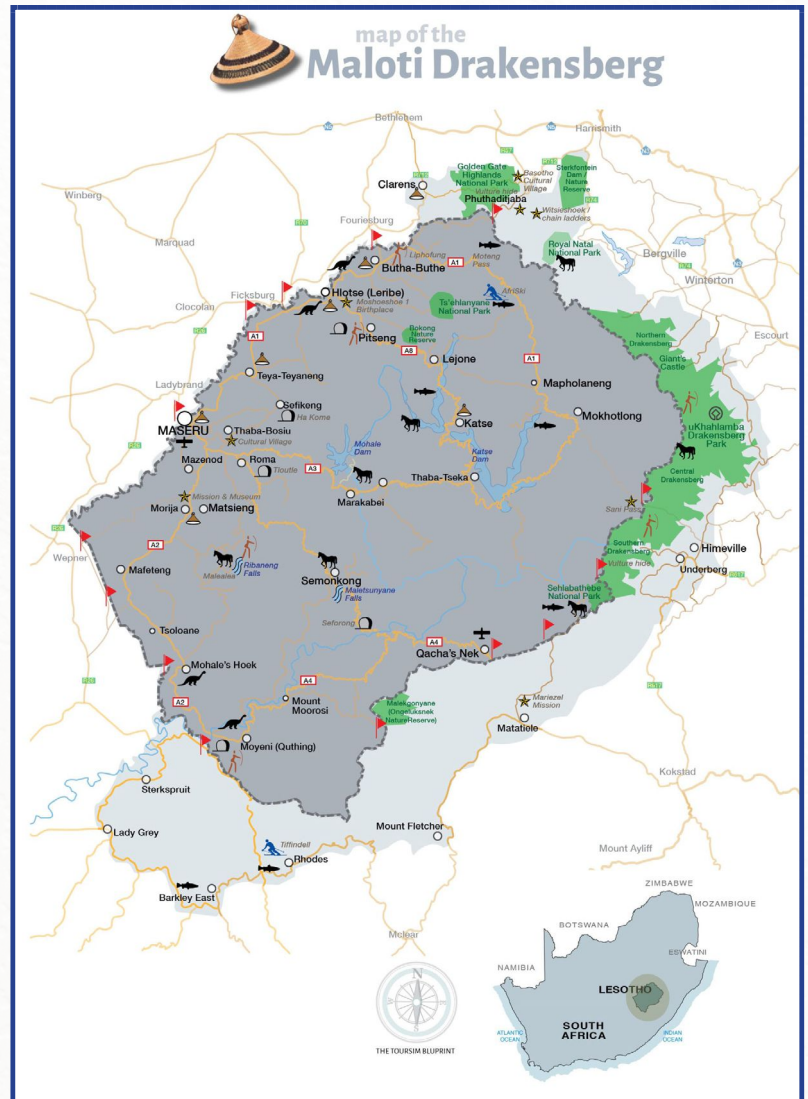


# Maloti-Drakensberg

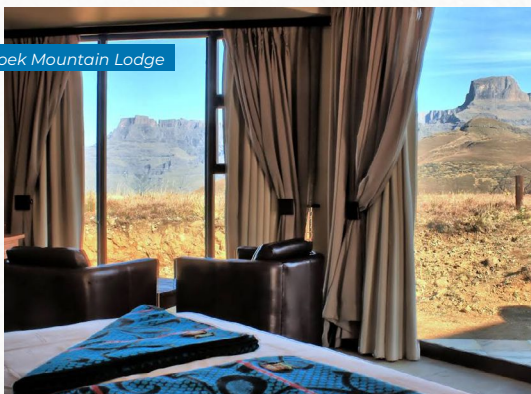
## *Itinerary ideas*

### Place to Sleep

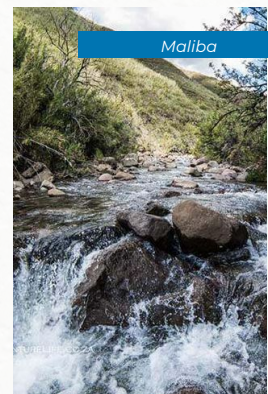
- ↳ iKhayalamafu Mountain Reserve
- ↳ Witsieshoek Mountain Lodge
- ↳ The Fat Mulberry Guest Farm
- ↳ aha Alpine Heath Resort
- ↳ The Cavern Resort and Spa
- ↳ Cathedral Peak Hotel
- ↳ Berghouse and Cottages
- ↳ Ezulwini Berg Resort
- ↳ Treks, Trips & Trails
- ↳ Pennygum Country Cottages
- ↳ Maliba Lodge
- ↳ Mooigezicht Clarens Guesthouse
- ↳ Cedar Garden B&B
- ↳ Semonkong Lodge
- ↳ Jovali Clarens
- ↳ Rockwood Earth Lodge
- ↳ Amphitheatre Backpackers



Witsieshoek Mountain Lodge



Cathedral Peak



Maliba